



managing your mobile resources



Mobile Solutions

TrimView RM

READY MIXED SOLUTION BRIEF



# TrimView RM

## READY MIXED SOLUTION BRIEF

In the ready mixed concrete industry, product delivery is critical. Concrete is a product that must be delivered on time, making efficient use of your fleet essential. Unscheduled idle time caused by delays at the job site, getting lost, or unauthorized stops can mean the difference between profit and loss on every delivery.

Dispatchers are constantly checking incoming customer orders against concrete production and delivery capacity. To effectively manage supply and demand, dispatchers need to know where the vehicle is located and what stage of the delivery cycle it is in. They can't always depend on accurate and timely updates from drivers.

Not having reliable location and status can lead to long wait times, late deliveries, inefficient fleet operations, lost revenue, and dissatisfied customers.

### THE SOLUTION

Trimble Mobile Solutions (TMS) provides the TrimView™ RM system, a fleet management solution designed specifically for the ready mixed concrete market. This fully automated system provides the dispatcher with real-time knowledge of the exact location and status of each vehicle in the fleet—**without driver involvement**. The dispatcher not only knows location but also each of the following statuses:

- Begin loading
- End loading
- Arrive job
- Leave job
- Stopped
- Speeding
- Start pour
- End pour
- Begin wash
- End wash
- Arrive plant
- Leave plant



### HOW DOES IT WORK?

A smart mobile device continuously determines truck location and status and automatically reports this data. The data is transmitted over a wireless connection to the TMS data center, where it is stored in secure, high-availability servers. The dispatcher accesses this data at any time over a high-speed internet connection.

Using TrimView RM mapping, messaging, and reporting applications, the dispatcher can view the location and status of each truck, conduct two-way text messaging with the driver, and generate reports that help management analyze the overall operation of the fleet.

### MANAGING YOUR MOBILE RESOURCES

From “begin loading” to “arrive plant”, important events are captured, time-stamped, relayed in real-time, and recorded for historical review and reporting. This improves the efficiency of the driver and the dispatch department. Accurate and reliable information delivered to the dispatcher allows him to monitor and adjust each job schedule to better service the customer while improving the efficiency of the fleet.

managing your mobile resources

### THE TRIMFLEET MOBILE DATA UNIT (MDU)

The TrimFleet™ MDU integrates a Global Positioning System (GPS) receiver, wireless modem, and specific ready mixed firmware logic in a single, low-profile enclosure that is securely mounted in each vehicle. While GPS technology continuously determines the vehicle's location, other truck-mounted sensors connect to the MDU to comprise an on-board system that automatically monitors and reports vehicle status with location and time stamps. Sensors include:

- Drum Rotation Sensor – automatically measures the rotational speed, direction and rotation count.
- Wash-Out Sensor – signals when the truck is being washed out.
- Optional Water-Add Sensor – measures total water added to the mix which helps to validate concrete quality.
- Ignition On / Off.



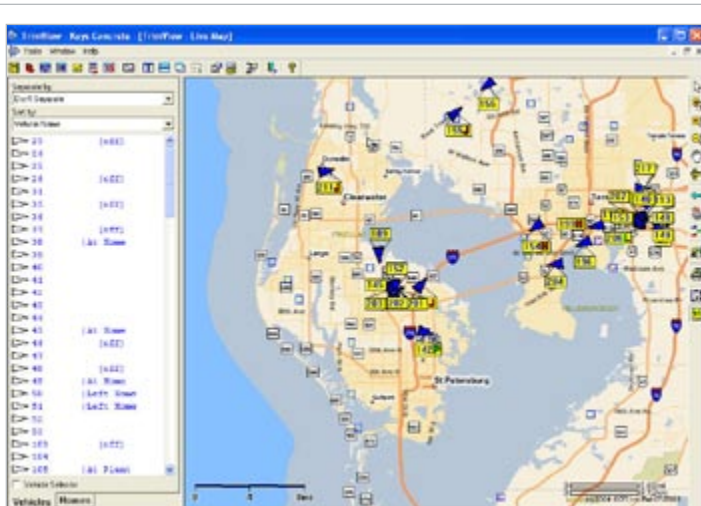
### THE TRIMFLEET MOBILE DATA TERMINAL (MDT)

The MDT device enables bi-directional canned and free-form messaging between the driver and dispatch. The driver can easily read text messages received from dispatch and send pre-defined response messages, simply by pushing a button. All messages are date and time stamped for future validation.

## OUR CUSTOMERS

Trimble Mobile Solutions is the leading provider of mobile resource management solutions for the ready mixed concrete industry. Customers with fleets of ten vehicles to thousands of vehicles have invested in the TrimView RM solution to grow their business and stay competitive. Our satisfied customers include Florida Rock, RMC Industries, Cemstone, Lehigh, Tarmac, All Star Transit Mix, Stoneway Concrete, Livingston's Concrete Service, Pioneer Concrete, Star Concrete, Robertson's Ready Mix, Rinker, Keys Concrete, Maricopa Ready Mix, Schuster and many, many more.

TMS also provides fleet management solutions for your service vehicles including aggregate, block, and cement trucks.





## OUR PARTNERS

---

Trimble Mobile Solutions partners with the leading manufacturer of quality concrete mixers and batch plants, McNeilus Truck and Manufacturing. McNeilus offers the TrimView RM truck-mounted components as a built-in option on new trucks as well as an aftermarket add-on to existing trucks.

The TrimView RM solution is integrated with all leading providers of dispatching systems.

## FOR MORE INFORMATION

For information on the Trimble Mobile Solutions TrimView RM system, call 1-800-525-3045. You can also visit us on the web at [www.trimble.com](http://www.trimble.com).

---

© 2005, Trimble Navigation Limited. All rights reserved. Trimble and the Globe & Triangle logo are trademarks of Trimble Navigation Limited registered in the United States Patent and Trademark Office and other countries. DriveSafe, TrimFleet, and TrimView are trademarks of Trimble Navigation Limited. All other trademarks are the property of their respective owners. Reorder PN 022506-008 (02/05).

 **Trimble**  
Mobile Solutions